

## Mobile I/O Software Install Guide

### Installing Mobile I/O Software

This version of the Mobile I/O software does not include an installer program. Installation is accomplished by dragging files in the Finder. All of the files required for using Mobile I/O are located in the “**Mobile I/O Software**” folder included with this package.

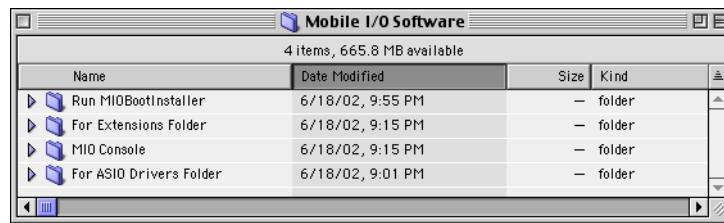


Figure 1: The Contents of the Mobile I/O Software Folder

To install the Mobile I/O Software, follow these steps:

1. Open the “For Extensions Folder” folder.
2. Drag the contents of the “For Extensions Folder” folder onto the System Folder of your boot disk. The Finder will ask if it should put the files into the Extensions folder. Click the OK button.

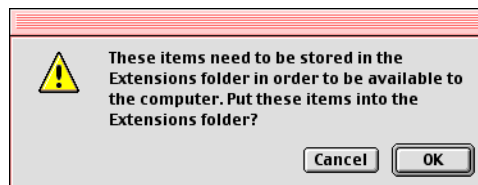


Figure 2: Finder File Copy Dialog

- If you have already installed the Mobile I/O driver software, the Finder may ask if it should replace the files you have already installed. Click OK.

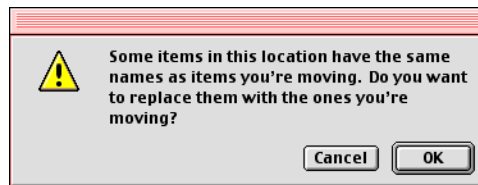
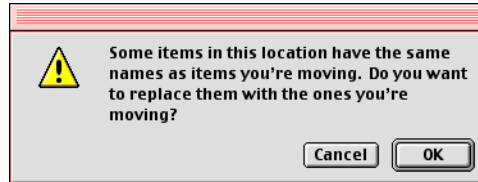


Figure 3: Finder Replace Files Dialog

3. Open the “For ASIO Drivers Folder” folder.

## *Mobile I/O Software Install Guide*

4. Copy the “Mobile IO™ ASIO” file to the “ASIO Drivers” folder for each ASIO host you want to use with Mobile I/O.
  - If you have already installed the Mobile I/O driver software, the Finder may ask if it should replace the files you have already installed. Click OK.



**Figure 4: Finder Replace Files Dialog**

5. Drag copy the “MIO Console” folder onto your Hard Drive.
  - If you have previously installed the MIO Console on your system you may want to replace your previous installation with the new one.
  - If you have created preset libraries for the console, you will want to save the “Parameter Library” folder from your previous installation.
  - One way to maintain your “Parameter Library” folder across updates of the Console is to move the “Parameter Library” folder out of the MIO Console folder and place it in a location that you use to maintain documents.
    - If you move the folder, you must make an alias to the new location of the folder named “Parameter Library” and place it into the same folder as the MIO Console application.
    - To create this alias, click and drag the moved “Parameter Library” folder back to the MIO Console Folder while holding down the <command> and <option> keys. This will cause the Finder to create an alias in the MIO Console folder.
6. Reboot your computer and connect the Mobile I/O hardware.
7. If the Firmware on you Mobile I/O needs to be updated to match the version in the package, use the instructions in Appendix 1 of the Mobile I/O User’s Guide to update the firmware of the unit.
  - If you update the firmware, reboot your computer after the firmware update is complete.
8. That’s it! You are ready to go. Read the “Configuring ASIO Hosts” chapter of the Mobile I/O User’s Guide if you need help with setting up your audio software to use an ASIO device.
9. Start recording and have fun!